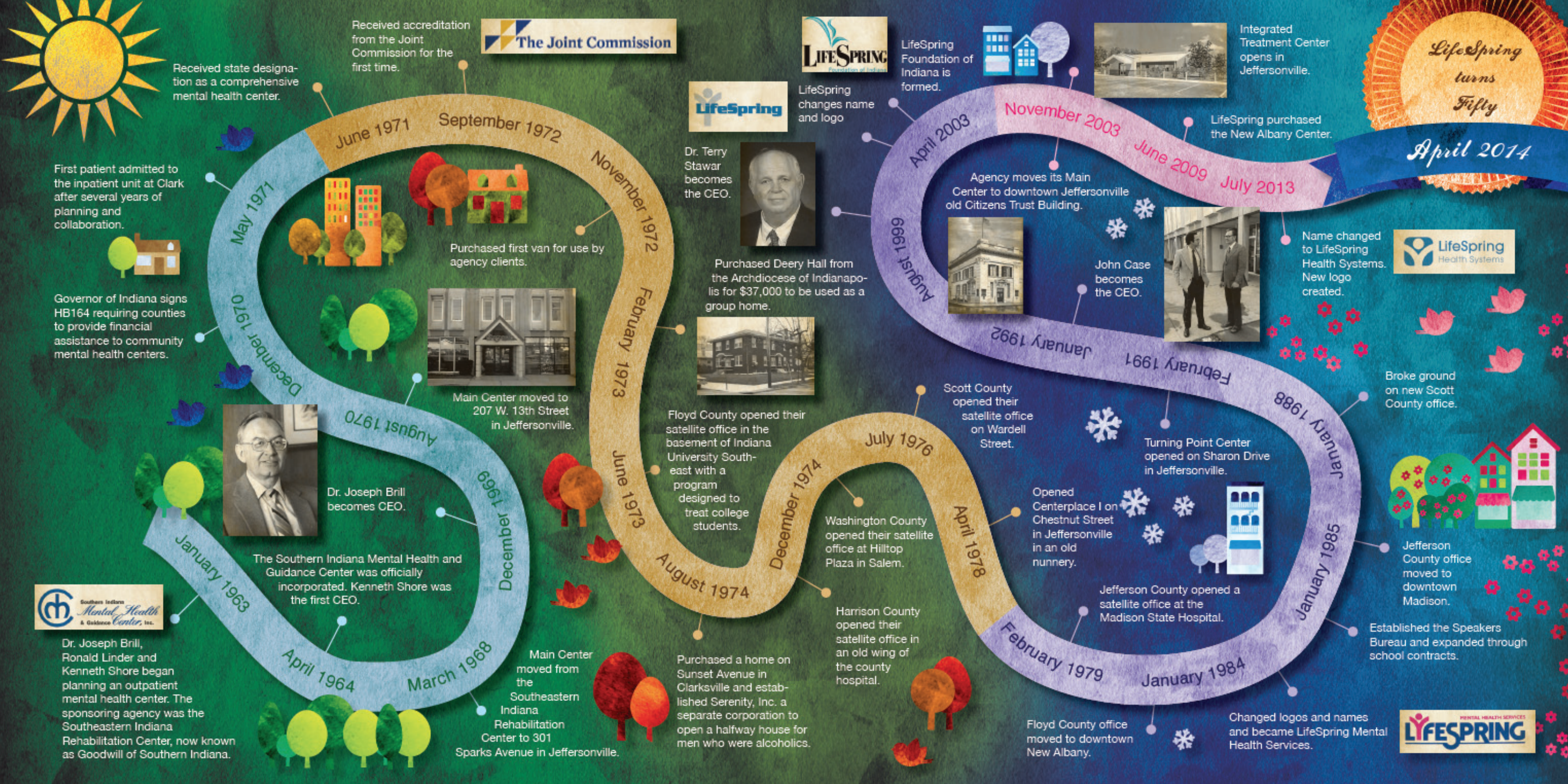




Celebrating Fifty Years





Received state designation as a comprehensive mental health center.

Received accreditation from the Joint Commission for the first time.



LifeSpring Foundation of Indiana is formed.



Integrated Treatment Center opens in Jeffersonville.



First patient admitted to the inpatient unit at Clark after several years of planning and collaboration.



Governor of Indiana signs HB164 requiring counties to provide financial assistance to community mental health centers.



Dr. Joseph Brill becomes CEO.

The Southern Indiana Mental Health and Guidance Center was officially incorporated. Kenneth Shore was the first CEO.



Dr. Joseph Brill, Ronald Linder and Kenneth Shore began planning an outpatient mental health center. The sponsoring agency was the Southeastern Indiana Rehabilitation Center, now known as Goodwill of Southern Indiana.

Purchased first van for use by agency clients.



Main Center moved to 207 W. 13th Street in Jeffersonville.

Main Center moved from the Southeastern Indiana Rehabilitation Center to 301 Sparks Avenue in Jeffersonville.

Dr. Terry Stawar becomes the CEO.



Purchased Deery Hall from the Archdiocese of Indianapolis for \$37,000 to be used as a group home.



Floyd County opened their satellite office in the basement of Indiana University Southeast with a program designed to treat college students.

Purchased a home on Sunset Avenue in Clarksville and established Serenity, Inc. a separate corporation to open a halfway house for men who were alcoholics.

Washington County opened their satellite office at Hilltop Plaza in Salem.

Harrison County opened their satellite office in an old wing of the county hospital.

Scott County opened their satellite office on Wardell Street.

Opened Centerplace I on Chestnut Street in Jeffersonville in an old nunnery.

Jefferson County opened a satellite office at the Madison State Hospital.

Floyd County office moved to downtown New Albany.

Changed logos and names and became LifeSpring Mental Health Services.



Agency moves its Main Center to downtown Jeffersonville old Citizens Trust Building.

John Case becomes the CEO.



Name changed to LifeSpring Health Systems. New logo created.



Broke ground on new Scott County office.



Jefferson County office moved to downtown Madison.

Established the Speakers Bureau and expanded through school contracts.

April 2014

July 2013

June 2009

November 2003

April 2003

August 1998

January 1992

February 1991

January 1988

January 1985

January 1984

February 1979

April 1978

July 1976

December 1974

August 1974

June 1973

February 1973

November 1972

September 1972

June 1971

May 1971

December 1970

August 1970

January 1963

April 1964

March 1968

December 1969

People Served

1970	1836	1985	4086	2003	6814
1971	3516	1986	3966	2004	6957
1972	4608	1987	4537	2005	7150
1975	3563	1988	4379	2006	7506
1977	3771	1989	4329	2007	7987
1978	2001	1990	6705	2008	8519
1979	3580	1991	5218	2009	8374
1980	4589	1992	5218	2010	7567
1981	4218	1993	5581	2011	6478
1982	3824	1996	6800	2012	6449
1983	3959	1999	6000	2013	6523
1984	3561	2002	5406		

Operating Budget

FY67	\$82,569.60	FY75	\$1,742,733.00
FY68	\$92,890.00	FY80	\$3,579,000.00
FY70	\$104,966.46	FY81	\$4,421,000.00
FY71	\$419,000.00	FY96	\$10,251,686.00
FY72	\$1,226,000.00	FY14	\$17,570,009.00